



Data Sheet for Synchro PRO  
Advanced Construction Project Management

2014

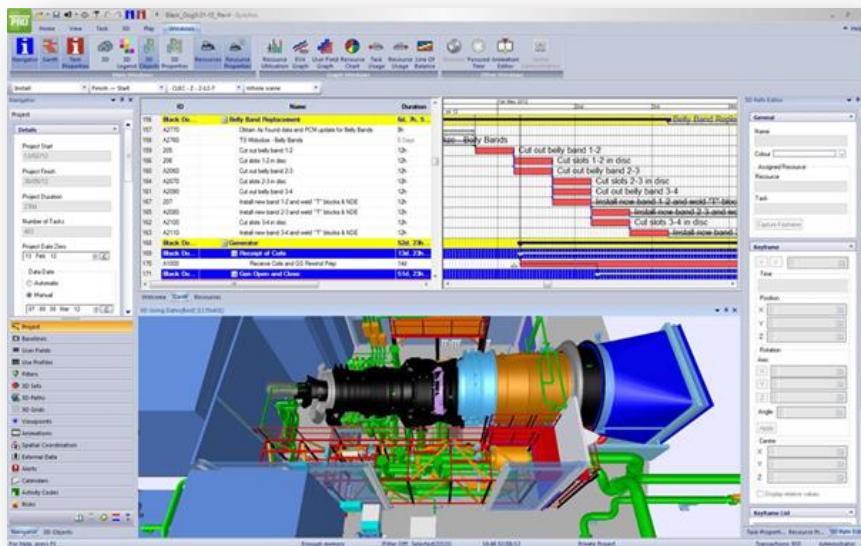


# SYNCHRO SOFTWARE

has one mission:

To create easy-to-use technology that enables construction teams to deliver the highest quality projects, safely, efficiently and with confidence.

Today's challenging projects demand extraordinary planning and management- this is achieved when great people work cooperatively for a shared goal. PRO utilizes an advanced Critical Path Method (CPM) engine to deliver traditional 2D project planning, scheduling and controls, schedule quality analysis and management reporting, with the added functionality of 4D simulation- precisely, and in real time. Our 4D has an advanced engineering computer graphics that provides everyone the ability to see the project tasks, the spaces, and the resources being used at any particular point in time, without having to interpret pages of Gantt charts and design documents. The entire team sees the same delivery approach and has a real time practice site on the computer to determine the optimal approach for a project.



## WHO USES SYNCHRO PRO?

Owners, contractors, subcontractors, specialty supplier and consultants use Synchro for the construction of buildings, infrastructure, roads and bridges, healthcare facilities, industrial processes, oil and gas, power and alternative energy, marine and mining projects.

Visit [SynchroLtd.com](http://SynchroLtd.com) for

- ❖ Case Studies
- ❖ Project Simulations
- ❖ Customer Testimonials

## WHY 4D?

Scheduling and planning is critical to safe, efficient, high quality construction. Synchro PRO's 4D provides insight into your project, giving your entire delivery team the ability to see the approach, and to cooperatively optimize the project plan. The computer becomes a practice field where sequences, safety, spatial relationships and more can be reviewed and discussed 5, 10, 100 times before ever going to the site- and then every day until the project is complete. Because Synchro links 3D Resources (human, material, equipment and space) to the tasks, making changes, comparing baselines to alternatives- are quick and easy. The impacts are seen instantly. Testing sequencing and running "what if" scenarios is highly efficient and engaging. Communications are crystal clear because you can see each step in the process. Cooperative knowledge sharing creates innovation and unique approaches that build competitive advantage. The result is an efficient, reliable and safe project delivery process that saves time and money.



## HOW DOES 4D WORK?

**Step 1: Schedule directly in Synchro** or import a schedule from legacy software. Synchro provides certified roundtrip data exchange with industry standard planning and scheduling systems.

**Step 2: Import the 3D models:** PRO offers comprehensive interoperability with all of the industry standard CAD platforms.



"Throughout my years at Bechtel, I have seen huge value in applying great data visualization tools for expediting communication of complex processes. For construction, we've got a real interest in bringing "real time" planning tools to our job sites, starting in the trailers. We see Synchro as a great tool for quickly aligning everyone during that short period when they are together before they disperse, which we believe will ensure a leaner work process in the field."

Jon Berkoe, P.E., BDES  
Senior Principal Engineer



**Step 3: Link the data; allocate resources to tasks** by linking the 3D elements with the tasks using the drag and drop tool, use the Create New Tasks tool to provide more detail in the schedule, use the 3D Subdivision tool to synchronize the design to the schedule, and finally, use the Auto-matching feature if you have pre-assigned codes that are shared between the 3D Resources and the Tasks. These unique features enable intelligent, rapid and accurate data linking.

**Step 4: Create detailed 4D project animations, run real-time delivery team reviews, and prepare impactful presentations.** View scheduling simulations for demolition, construction, assembly and logistics, focus on specific areas or phases or view the entire project. Use the CPM schedule data, the graphs and reports to assess the project plan and to optimize and adjust activities, durations and dependencies. Watch the project come to life right before your eyes using our advanced 4D simulation capabilities.

**Step 5: Manage and deliver the project with confidence and clarity.** Track and record project performance, provide real-time team feedback, discover issues and spatial conflicts before construction begins and throughout the duration of the project. Allow project leadership to see issues quickly and to provide clear decision support that enables the agreements necessary for schedule adjustments and updates to keep the project on target for cost, time, safety and quality.

## THE BENEFITS:

Every day we hear about the remarkable results are customers are experiencing:

- ✓ Gain a clear understanding of your project, down to the fine detail, from preconstruction through completion
- ✓ Improve quality- run “what if” analysis and immediately review schedule updates with intelligent linking
- ✓ Communicate clearly and quickly
- ✓ Discover, understand and mitigate risks in the project schedule by practicing, 5, 10, 100 times on the computer
- ✓ Save time and money by increasing productivity, reducing unforeseen conditions and costly late stage changes
- ✓ Integrate and coordinate subcontractor and supplier procurement focused on a unified project delivery approach
- ✓ Improve environment, health and safety conditions by managing material, people, spaces and temporary equipment resource utilization
- ✓ Win work by clearly and quickly illustrating your approach, demonstrating innovation and providing risk identification and avoidance.



“We are excited about the visibility Synchro PRO provides us an iterative planning tool and look forward to how we may expand its use over our portfolio of products.”

R. Mendoza  
Director Project  
Integration



WALT DISNEY  
Imagineering

## WHY SYNCHRO?

- Synchro evolves construction project delivery to the 21st century.
- Our Software is unique in its ability to enable full round trip data synchronization (Import, Export, Synchronize To and From) to facilitate workflows for both upstream and downstream delivery processes.
- Only Synchro PRO provides object subdivision and drawing tools to accurately reflect your construction approach in the simulation without having to go to the designer for revisions.
- Synchro leads the industry with 4D spatial coordination and uniquely offers both static and dynamic analysis and space-time clash identification and reporting for early conflict resolution.
- Only Synchro provides real time visualizations with intelligent linking between tasks, resources and the 3D model for instant revisions and “what if” planning.
- Synchro is easy to learn and free eTraining is included with all licenses.
- Synchro is cost effective and scales- any team member can view project files and cooperate for FREE with Synchro Open Viewer.
- Our support team is here to help you get up and running and answer questions. We offer personal over the top support, always.

## SYNCHRO SOFTWARE SERVICES:

Our team of experts is ready to help you in all areas of project delivery from pre-construction and negotiations to project delivery refinement. Contact us to discuss your needs in more detail.

- ❖ 4D Implementation Support
- ❖ Detailed 3D Construction Modelling
- ❖ Real-time 4D construction sequencing
- ❖ Logistics & Phasing Presentations



**“I am a fan of Synchro because it allows me to see into the future. I can get the project plan out of the Superintendents head and into a movie that people can understand. I feel like we are truly communicating and scheduling to a higher level than could have ever been achieved prior to Synchro.”**

**Benjamin Crosby**  
Director of BIM





## LEGACY SCHEDULING SOFTWARE INTEROPERABILITY:

- Oracle Primavera P6®
- Asta PowerProject®
- Microsoft Project®
- PMA NetPoint®
- Microsoft Excel®

## MINIMUM SYSTEM REQUIREMENTS:

- 3.0 GHz Dual Core Processor
- 8GM of RAM
- 1 GB graphics card (OpenGL compatible)
- 1 GB hard disk space for installation files
- 1 GB for each typical project files
- Network connectivity
- Supported graphics card and drivers for HOOPs  
<http://developer.techsoft3d.com/hoops/hoops-visualize/graphics-cards/>
- 1280 x 1024 screen resolution
- Microsoft Windows 7 or newer

## SYNCHRO PRODUCT COMPARISON:

	PRO	Scheduler	Open Viewer
Advanced CPM Scheduling Calculator	✓	✓	Viewing
Legacy Scheduling Software Interoperability	✓	✓	Viewing
Dynamic & Static Clash Detection Reporting	✓	✗	✓
3D CAD Control with Cutting & Drawing Tools	✓	✗	Viewing
3D PDF Export	✓	✗	✓
Real-Time 4D Simulations and Viewpoints	✓	✗	Viewing
Intelligent Linking for “What If” Analysis	✓	✗	Viewing
Risk Planning & Analysis	✓	✗	Viewing
Resource Management & Optimization	✓	✗	Viewing
Standard & Custom Reporting	✓	✓	✓
Login to Synchro PRO Server	✓	✓	✓

## LANGUAGES SUPPORTED:

English, Chinese, Russian, Portuguese, French, Korean, Spanish, Polish, Turkish, Arabic



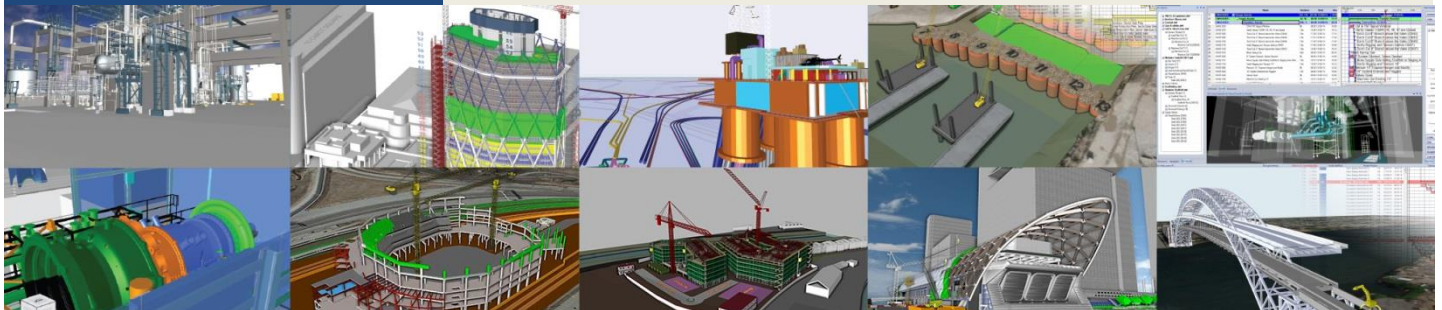
# INTEROPERABILITY WITH CAD SYSTEMS:

## FILE IMPORT:

	File Extension(s)
ACIS Autodesk AutoCAD Autodesk Navisworks Autodesk 3DsMax Autodesk Inventor Autodesk Revit Bentley Microstation Bentley SS3 CATIA V4 CATIA V5 Collada Dassault Systems HOOPS stream file I-deas IFC IGES part files PTC ProE/Creo Rhino Siemens NX Siemens Parasolid Solid Edge SolidWorks STEP part files Stereo Lithography Trimble SketchUp UGS JT Unigraphics NX Universal 3D VDA-FS VRML files 3D PDF	SAT, SAB DWG, DXF DWF, DWFX FBX IPT, IAM DWF, SP (Synchro Plugin Required) DGN DGN, SP (Synchro Plugin Required) EXP, DLV, MODEL, SESSION CATProduct, CATPart, CATDrawing, CATShape, CGR DAE 3D XML HSF MF1, ARC, UNV, PKG IFC 2x3, 2x2 IGES, IGS PRT, ASM, NEU, XAS, XPR, 3DM PRT xmt_bin, x_b, x_t, xmt_txt ASM, PAR, PWD, PSM SLDASM, SLDPRT STEP, STP STL SKP JT PRT U3D VDA VRML, WRL PDF, PRC

## FILE EXPORT:

	File Extension(s)
Autodesk Autodesk FBX Collada HOOPS Stream File VRML '97 3D PDF	DWF, DWFX FBX DAE HSF Only geometries, Beta-version WRL PDF, PRC



## PRODUCT PRICING:

Synchro PRO	\$USD excl Tax
Perpetual Named User License (includes first year annual maintenance)	\$6,500
Perpetual Named User Annual Maintenance (future years)	\$1,250
Perpetual Shared User License (includes first year annual maintenance)	\$8,500
Perpetual Shared User Annual Maintenance (future years)	\$1,650
Rental Named User License: 1 Month	\$1,500
Rental Named User License: 3 Month	\$ 300
Rental Named User License: 6 Month	\$ 750
Rental Named User License: 1 Year	\$1,375
Rental Named User License: 2 Year	\$2,500
Rental Named User License: 3 Year	\$4,500
<b>Synchro PRO Server</b>	
Rental Named Project License; Annual Subscription	\$1,250
Subscription Synchro Cloud Hosting Services; Annual Fee	\$1,500
Subscription Database Module Annual Subscription License	\$1,500
<b>AVEVA Review™ 3D File Converter</b>	
Perpetual RVM to DWF Corporate License (maintenance and one named user)	\$6,000
Perpetual Additional Named User License	\$1,000
Perpetual Named User Annual Maintenance	\$1,000
<b>Synchro Software Support Services</b>	
Getting Started Support Package	FREE
eTraining Introduction to Synchro Course; First Year Subscription	FREE
Individual Remote Desktop Assistance; Annual Subscription	\$ 250
Two-Day On-Site Group Training Session	\$3,600
Senior 4D VDC Specialist per day	\$1,800
Synchro PRO Modelling Specialist per day	\$1,000
<b>Synchro Open Viewer</b>	<b>FREE</b>
<b>Synchro Scheduler</b>	<b>FREE</b>

- VAT will be added to all UK purchases
- All products can be purchased via credit card on the product page of our website







# SYNCHRO

S O F T W A R E

Contact us:

For more information about Synchro Software LTD  
Advanced Construction Project Management

Visit [synchro ltd.com](http://synchro ltd.com)  
[marketing@synchro ltd.com](mailto:marketing@synchro ltd.com)

Synchro Software Ltd  
Faraday Wharf  
Innovation Birmingham Campus, Holt Street Birmingham  
B7 4BB  
United Kingdom

Synchro USA Ltd  
745 Atlantic Avenue  
Boston, MA 02111  
USA